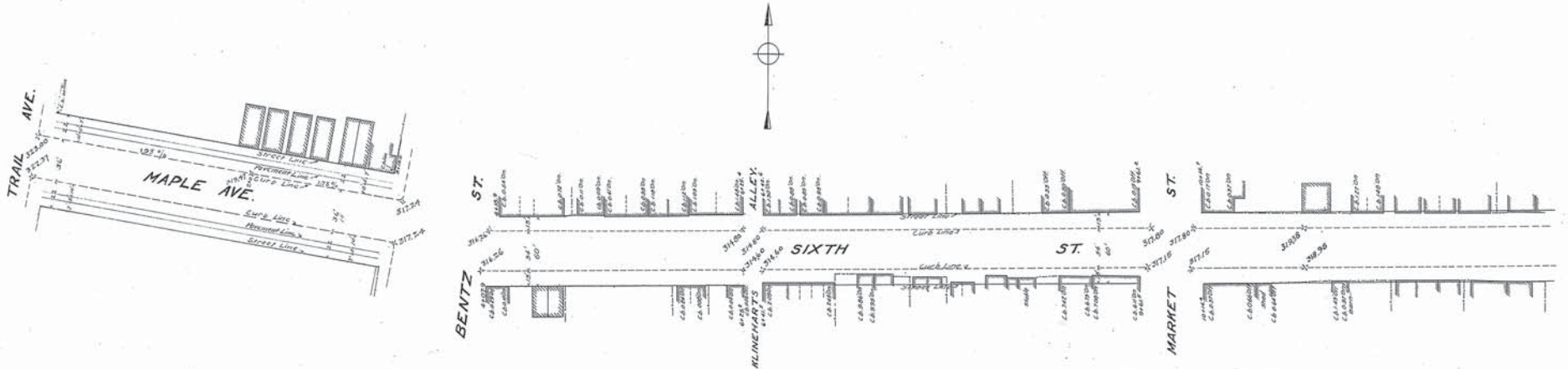
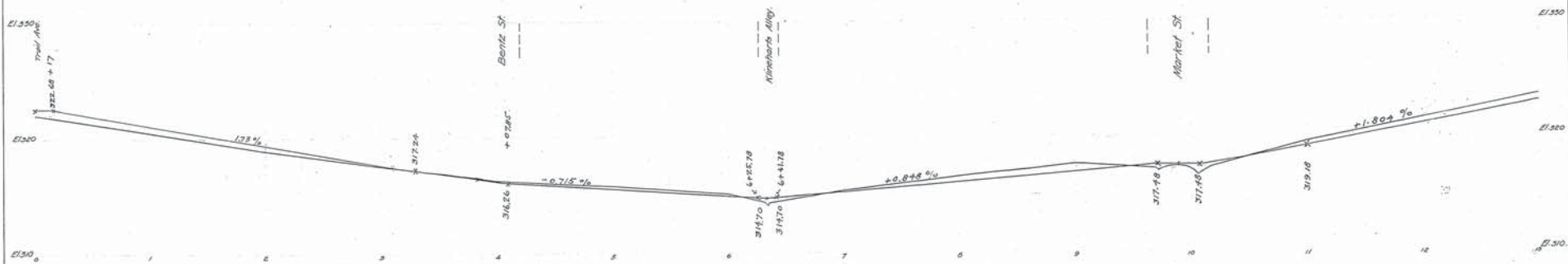


Drawn by B.C. 270
Checked by J.C. 240

WESTINGHOUSE, CHURCH, KERR & Co
ENGINEERS
8 & 10 BEDELT ST., NEW YORK.



Note: The line shown in red and marked street line represents a line beyond which no buildings shall be built.
The grade line shown on profile is an average grade between curbs.



Adopted by The Mayor and Aldermen of Frederick,
by ordinance passed and approved, Dec. 3, 1909.

Attest:
M. A. McConiff
City Registrar

The Mayor and Aldermen of Frederick,
By
Geo. Edw. Smith Mayor.

FREDERICK CITY
PLAN & PROFILE OF SIXTH STREET.
SHOWING ESTABLISHED GRADE & STREET LINE.
Frederick Md. Oct 9, 1907.
Sheet 1 of 2 Sheets.

N.Y. No 19864

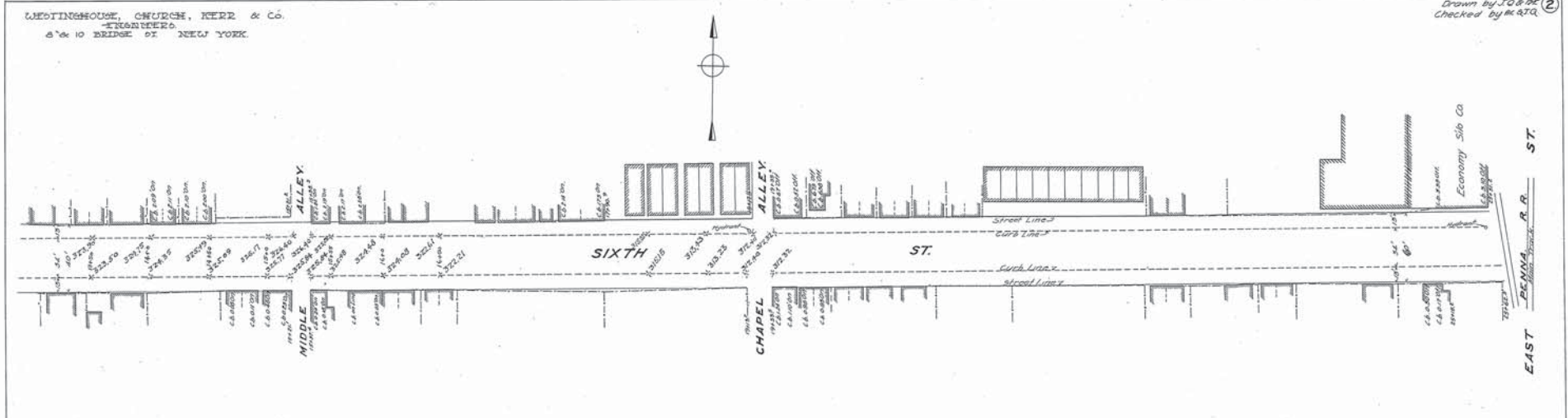
WESTINGHOUSE CHURCH, KERR & CO.

6 TH STREET

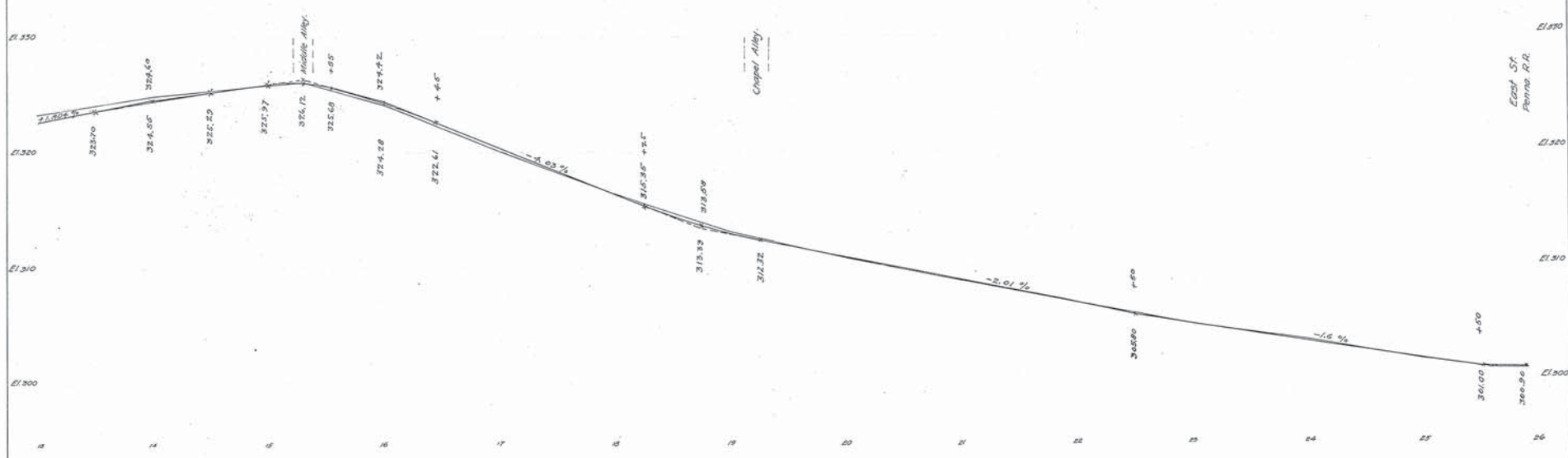
19864

WESTINGHOUSE, CHURCH, KERR & Co.
ENGINEERS
67 & 10 BRIDGE ST. NEW YORK

Drawn by J.O.B.K.
Checked by R.R.Q.



Note: The line shown in red and marked street line represents a line beyond which no buildings shall be built.
The grade line shown on profile is an average grade between curbs.



Adopted by The Mayor and Aldermen of Frederick,
by ordinance passed and approved Dec. 3, 1909.

Attest:
M. A. McCaffrey
City Registrar

The Mayor and Aldermen of Frederick,
By
Geo. Edw. Smith Mayor.

FREDERICK CITY.
PLAN & PROFILE OF SIXTH STREET.
SHOWING ESTABLISHED GRADE AND STREET LINE.
Scale: 1" = 20' Vert.
1" = 20' Hor.
Frederick Md.
Oct. 9, 1907.
Sheet 2 of 2 Sheets.

N.Y. No 19865.
7-6-F-1