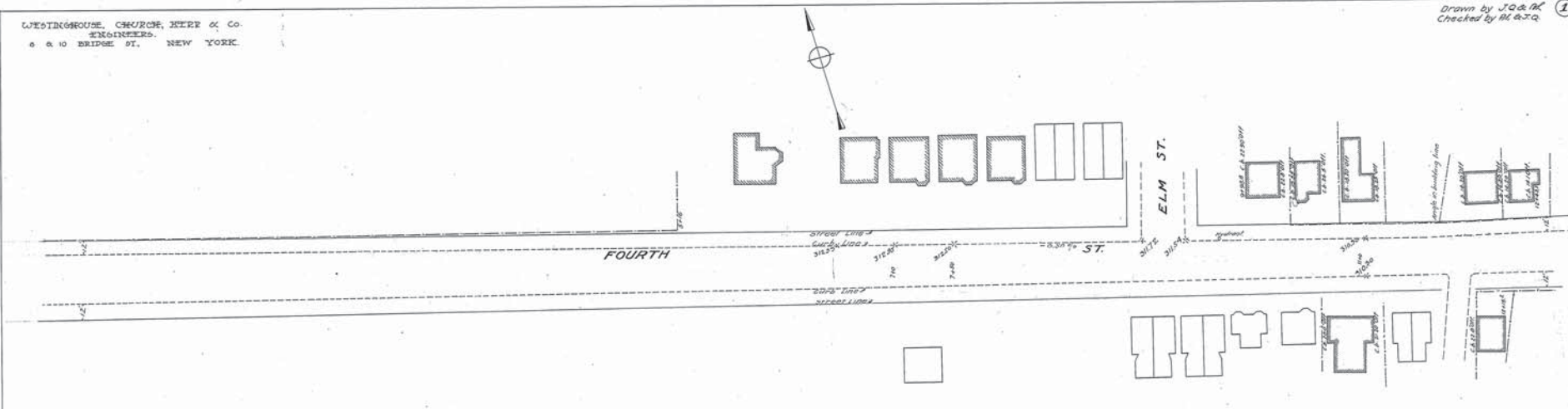
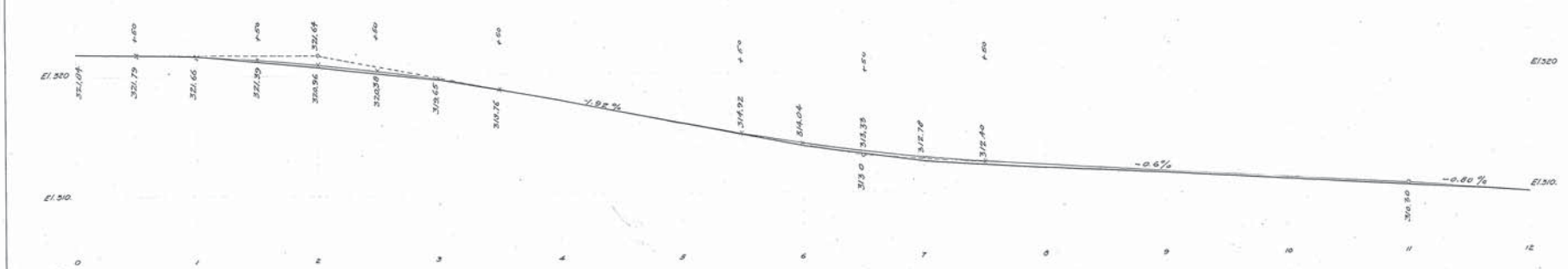


Drawn by J.Q. & M.
Checked by M. & J.Q.

WESTINGHOUSE, CHURCH, KERR & CO.
ENGINEERS.
6 & 10 BRIDGE ST. NEW YORK.



Note: The line shown in red and marked street line represents a line beyond which no buildings shall be built.
The grade line shown on profile is an average grade between curbs, or track grade.



Adopted by The Mayor and Aldermen of Frederick
by ordinance passed and approved Dec. 3, 1909.

Attest:
M. A. McCaffrey
City Registrar

The Mayor and Aldermen of Frederick
By *Edwin Smith* Mayor.

FREDERICK CITY.
PLAN & PROFILE OF FOURTH STREET.
SHOWING ESTABLISHED GRADE & STREET LINE.
Scales: 1" = 40' Hor.
Frederick Md. Jan 20 - 1908.

Sheet 1 of 4 Sheets

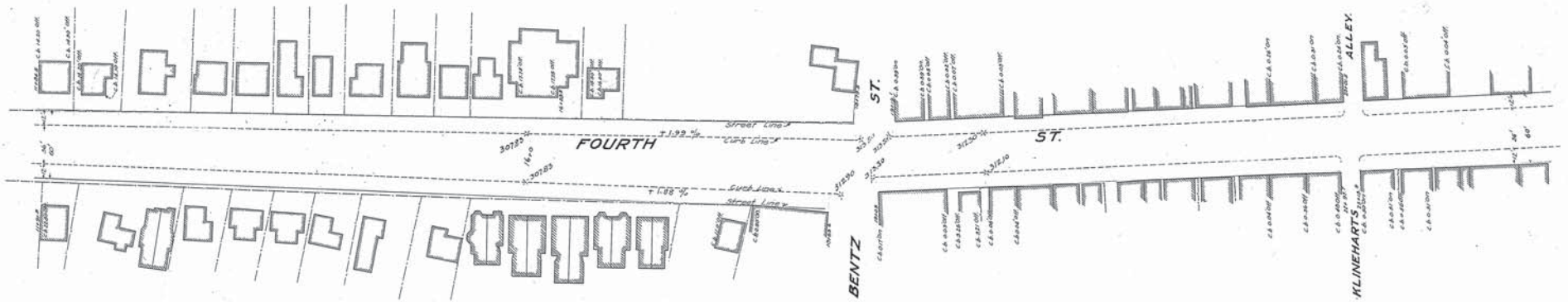
N. Y. No 20050

WESTINGHOUSE CHURCH, KERR & CO. 20050

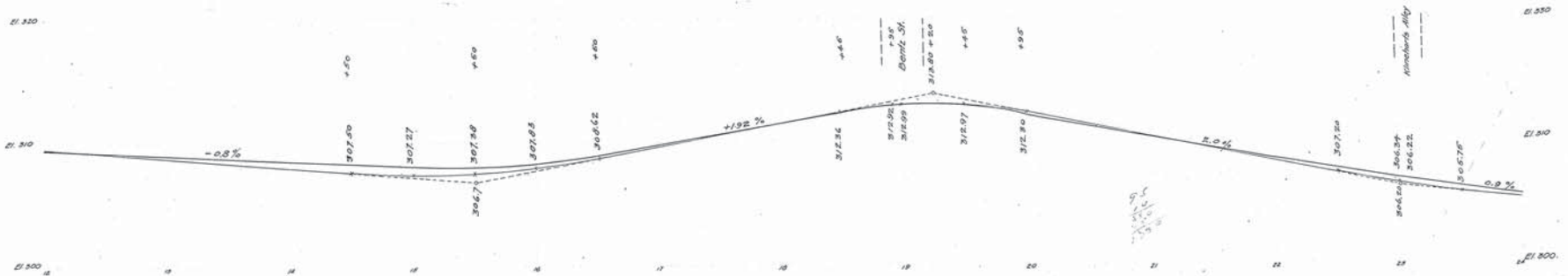
4TH STREET

WESTINGHOUSE, CHURCH, KERR & Co.
ENGINEERS
8 & 10 BRIDGE ST., NEW YORK

Drawn by J.O. & B.C.
Checked by H.S. & J.Q. (2)



Note: The line shown in red and marked street line represents a line beyond which no buildings shall be built.
The grade line shown on profile is an average grade between curbs, or track grade.



Adopted by The Mayor and Aldermen of Frederick,
by ordinance passed and approved Dec. 3, 1909.

Attest:-
M. W. McCaffrey
City Registrar.

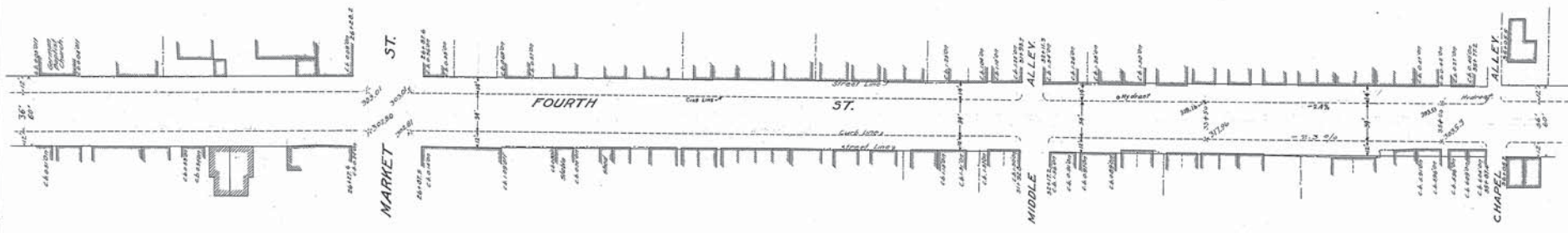
The Mayor and Aldermen of Frederick.
By: *Edu. Smith* Mayor.

FREDERICK CITY.
PLAN & PROFILE OF FOURTH STREET.
SHOWING ESTABLISHED GRADE & STREET LINE.
Scale: 1" = 20 Feet
Frederick Md
Jan. 20-1909.
Sheet 2 of 4 Sheets.

N. Y. NR 20051

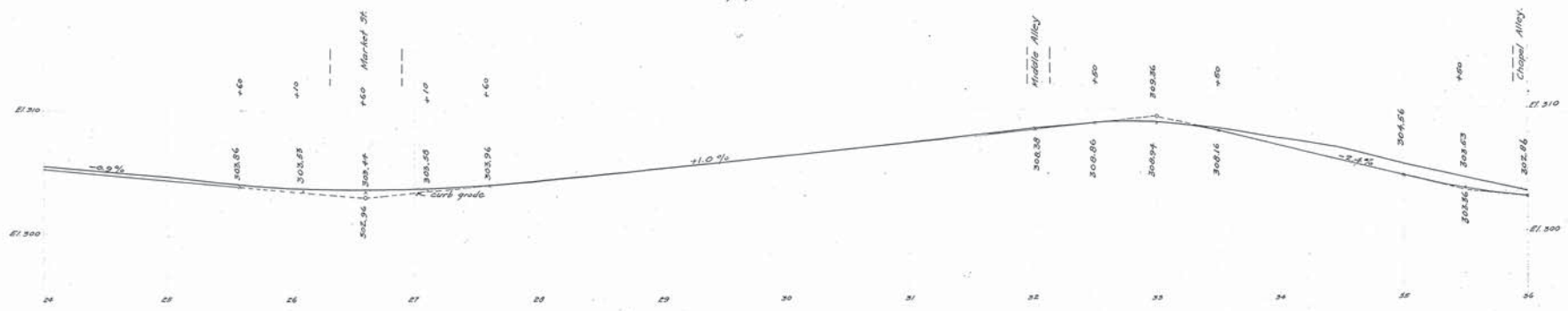
WESTINGHOUSE, CHURCH, KERR & Co.
ENGINEERS
6 & 10 BRIDGE ST., NEW YORK.

Drawn by J.O. & A.C.
Checked by R.L. & J.Q. (3)



AMENDED BY ORDINANCE PASSED AND APPROVED
JULY 16, 1930
THE MAYOR & ALDERMEN OF FREDERICK
ATTEST:
Anthony P. Henderson
CITY REGISTER
By Lloyd C. Culler
MAYOR

Note: The line shown in red and marked street line
represents a line beyond which no buildings
shall be built.
The grade line shown on profile is an
average grade between curbs, or track grade.



Adopted by The Mayor and Aldermen of Frederick
by ordinance passed and approved Dec. 3, 1909

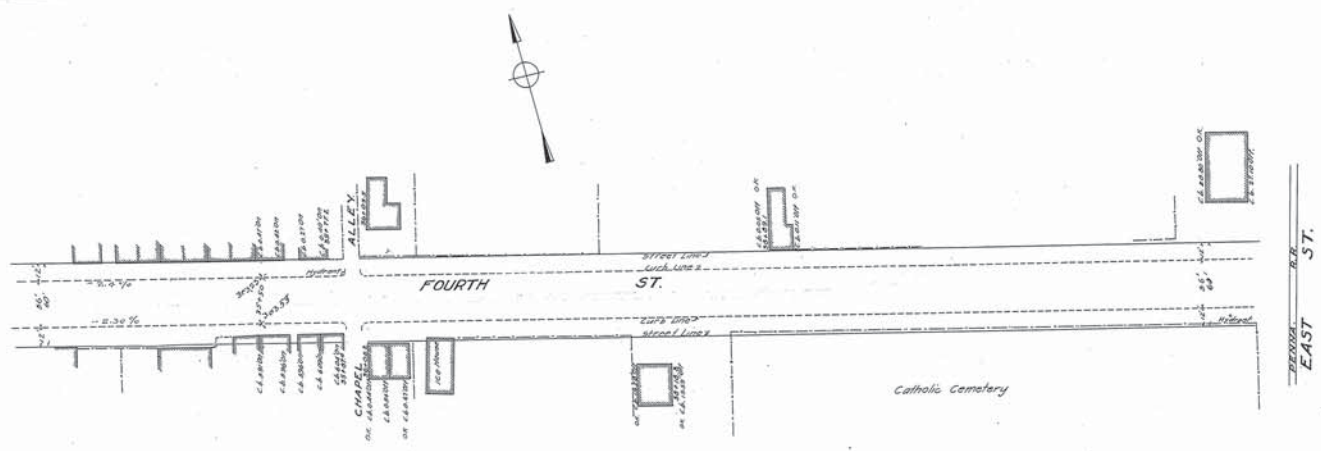
Attest:
M.A. McCaffrey
CITY REGISTRAR.
The Mayor and Aldermen of Frederick.
By Wm. Echo Smith
MAYOR.

FREDERICK CITY.
PLAN & PROFILE OF FOURTH STREET.
SHOWING ESTABLISHED GRADE & STREET LINE.
Scale: 1"=40' Vert. 1"=20' Hor.
Frederick Md. Jan. 20-1908.
Sheet 3 of 4 Sheets.

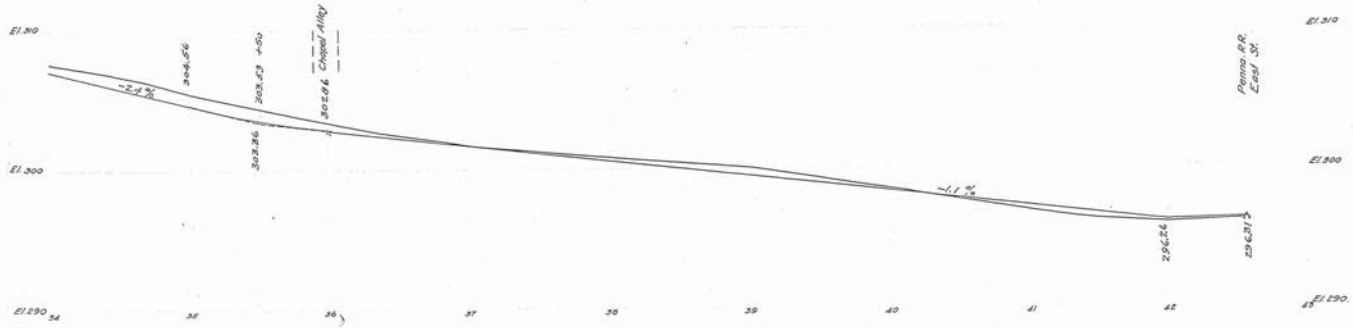
N. Y. No 20052
9-6-F-1

Drawn by J.C. & R.C.
Checked by G.S. & J.G.

WESTINGHOUSE CHURCH, KERR & Co.
ENGINEERS
6 & 10 BRIDGE ST. NEW YORK.



Note: The line shown in red and marked street line represents a line beyond which no buildings shall be built. The grade line shown on profile is an average grade between curbs.



Adopted by The Mayor and Aldermen of Frederick,
by ordinance passed and approved Dec. 3, 1909.

Attest:
W. H. McLaughlin
City Registrar.

The Mayor and Aldermen of Frederick,
By *Geo. Edwin Smith* Mayor.

FREDERICK CITY.
PLAN & PROFILE OF FOURTH STREET.
SHOWING ESTABLISHED GRADE & STREET LINE.
Scales: 1"=50 FT. Frederick Md. Jan. 21-1906.
Sheet 4 of 4 Sheets.

N. Y. No. 20053.
P. 2-7-1

WESTINGHOUSE CHURCH, KERR & CO.

4TH STREET

20053