

Adopted by The Mayor and Aldermen of Frederick,  
by ordinance passed and approved, Dec. 3, 1909.

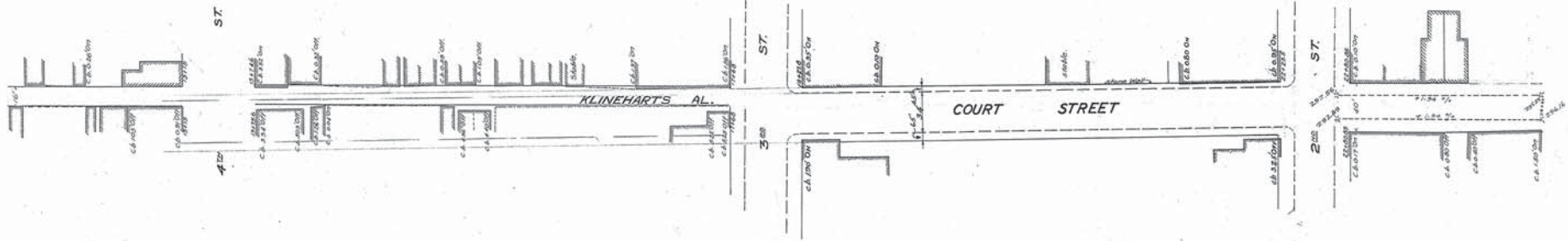
Attest  
W. A. McCaffrey  
City Registrar

The Mayor and Aldermen of Frederick,  
By Geo. Edw. Smith Mayor.

FREDERICK CITY  
PLAN & PROFILE OF KLINEHARTS ALLEY.  
SHOWING ESTABLISHED GRADE & STREET LINE.  
Frederick Md.  
August 22 '07.  
Sheet 1 of 4 Sheets.

WESTINGHOUSE CHURCH KERR & Co.  
ENGINEERS  
6 & 10 BRIDGE ST. NEW YORK.

Drawn by J.O.G.H.  
Checked by M.S.G. (2)



AMENDED BY ORDINANCE PASSED AND APPROVED  
AUGUST 6, 1930  
THE MAYOR & ALDERMEN OF FREDERICK  
ATTEST:  
*Andrew G. Henderson*  
CITY REGISTER  
By *Hugh C. Sullivan*  
MAYOR

Note: The line shown in red and marked street line  
represents a line beyond which no buildings  
shall be built.  
The grade line shown on profile is an  
average grade between curbs.



Adopted by The Mayor and Aldermen of Frederick  
by ordinance passed and approved, Dec. 3, 1909

Attest:  
*M. A. McCaffrey*  
CITY REGISTRAR.

The Mayor and Aldermen of Frederick  
BY *Geo. Edwin Smith* Mayor

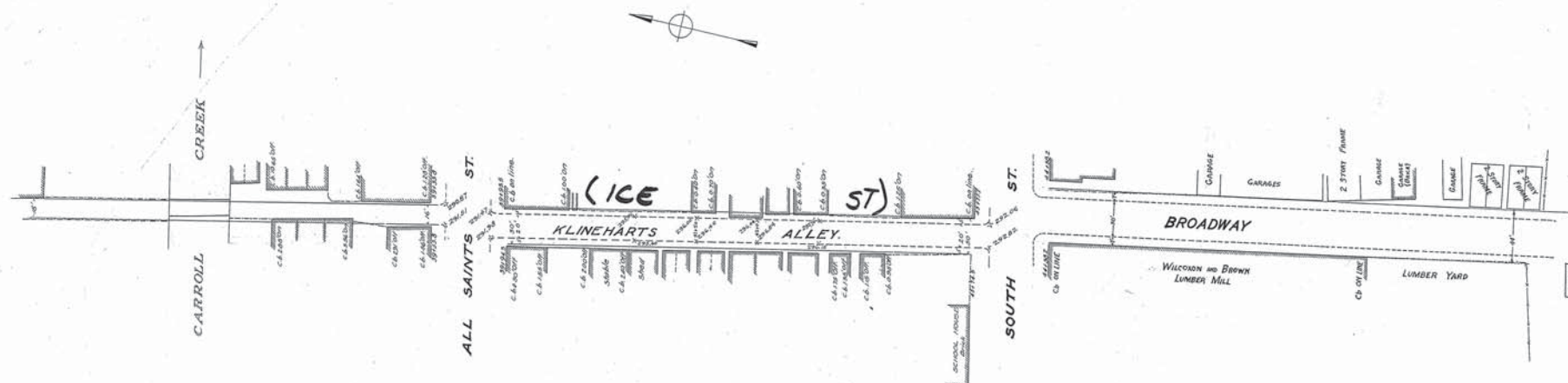
FREDERICK CITY.  
PLAN & PROFILE OF KLINEHART'S ALLEY  
SHOWING ESTABLISHED GRADE & STREET LINE.

Scales: 1" = 40' (Plan), 1" = 40' (Profile)  
Frederick Md.  
Jan 21-1909.  
Sheet 2 of 4 Sheets.

N. Y. No 20058  
P.L. - P.1

WESTINGHOUSE CHURCH, KERR & CO.

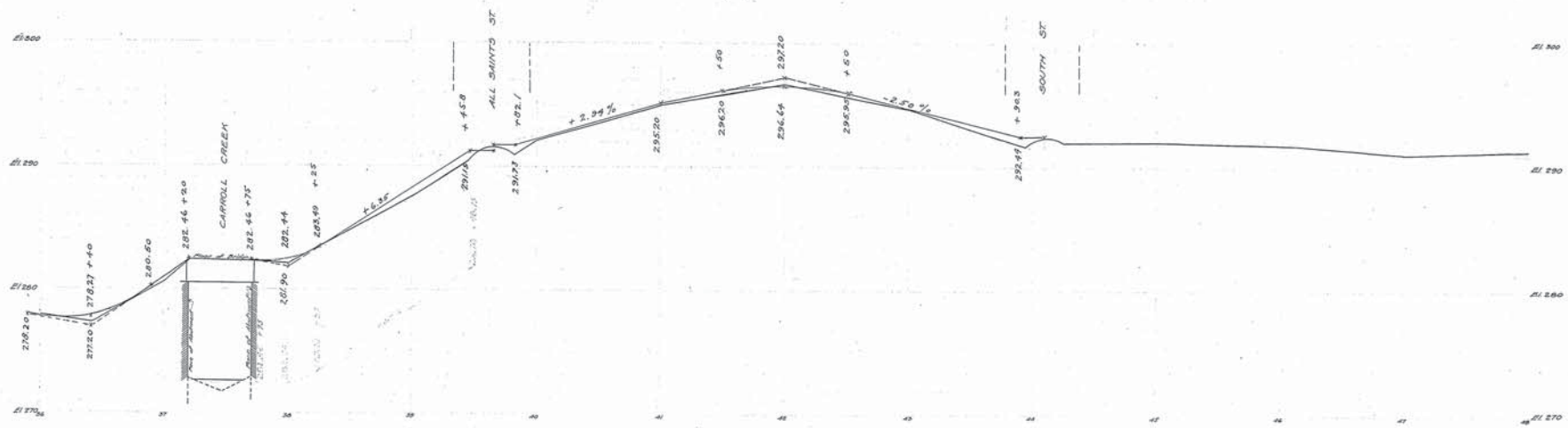
KLINEHART'S ALLEY



Note: The line shown in red and marked street line represents a line beyond which no buildings shall be built.  
The grade line shown on profile is an average grade between curbs.

AMENDED BY ORDINANCE PASSED AND APPROVED  
AUGUST 6, 1930

ATTEST:  
*Anthony A. ...*  
CITY REGISTER  
By *...*  
MAYOR



Adopted by The Mayor and Aldermen of Frederick  
by ordinance passed and approved Dec. 3, 1909

Attest: *W.A. McCaffrey*  
City Registrar  
By *Geo. Edwin Smith*  
Mayor

FREDERICK CITY.  
PLAN & PROFILE OF KLINEHARTS ALLEY.

SHOWING ESTABLISHED GRADE OF STREET LINE.  
Scale: 1" = 4' Vert.  
1" = 40' Hor.  
Frederick Md. Jan 22-1908.  
Sheet 4 of 4 sheets.

ICE ST.

WESTINGHOUSE CHURCH, KERR & CO.

KLINEHARTS ALLEY (ICE STREET)

20060